

YEAR 2014

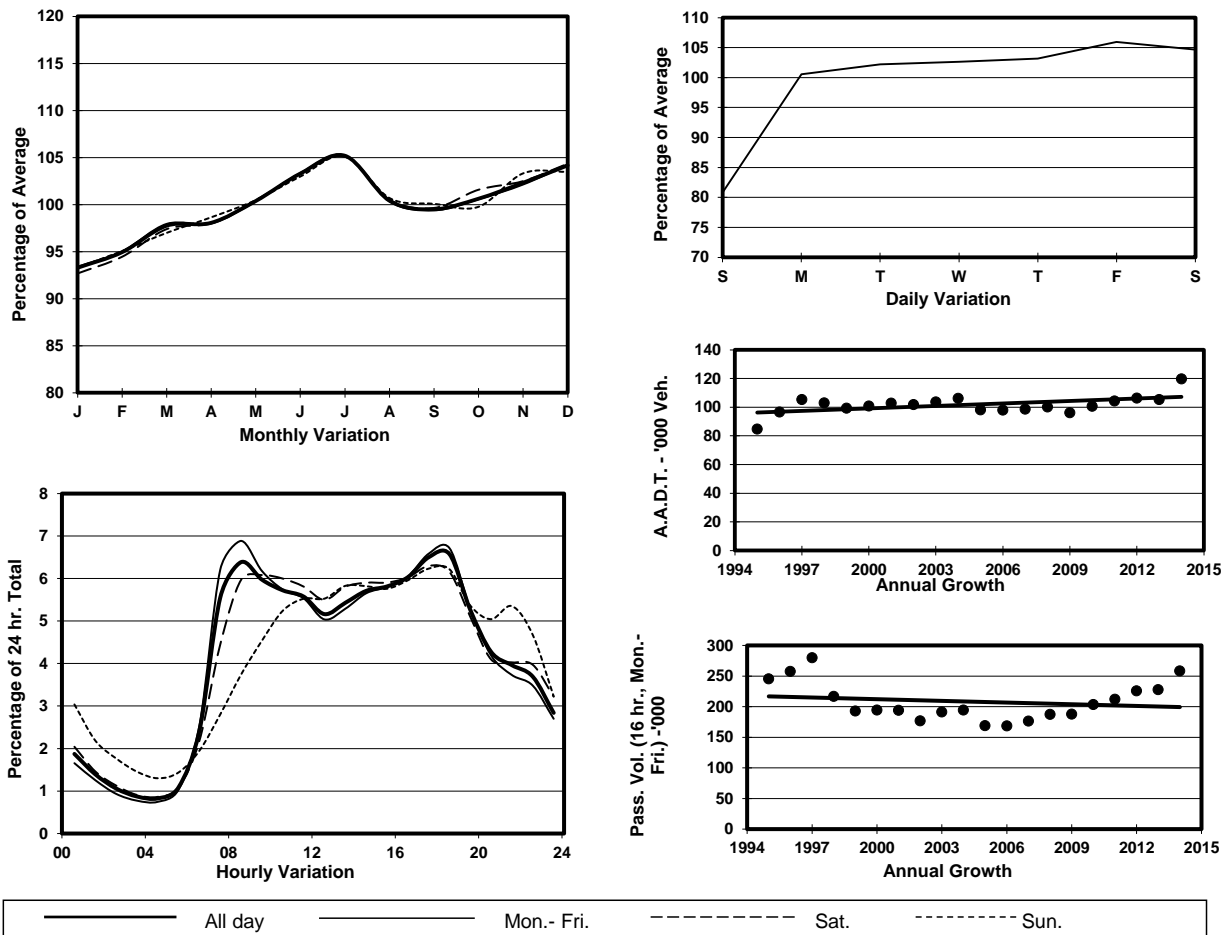
Location

Screenline Y-Y (Boundary between Tuen Mun & Yuen Long)

Stations on Cordon/Screenline

5025 and 6213

1. TRAFFIC FLOW VARIATION AND GROWTH



2. TRAFFIC CHARACTERISTICS (BY DIRECTION)

Parameter	All - Day	Mon. - Fri.	Sat.	Sun.
EAST BOUND				
A.A.D.T.	60610	62740	64800	50230
R 12 / 24 - %	69.1	70.4	68.6	61.8
R 16 / 24 - %	87.8	88.6	87.2	83.6
AM Peak Hour	0800-0900	0800-0900	0900-1000	0900-1000
One-way flow at AM peak hour	3700	4180	3740	2220
T - % (AM)	-	26.9	-	-
PM Peak Hour	1700-1800	1700-1800	1700-1800	1700-1800
One-way flow at PM peak hour	4080	4310	4200	3120
T - % (PM)	-	25.3	-	-
Prop.of commercial vehicles - 16 hr.	-	25.5	-	-
WEST BOUND				
A.A.D.T.	59270	61920	62170	47510
R 12 / 24 - %	71.8	73	71.3	64.7
R 16 / 24 - %	87.4	88.1	87	83.6
AM Peak Hour	0800-0900	0800-0900	0800-0900	0900-1000
One-way flow at AM peak hour	3950	4410	4020	2220
T - % (AM)	-	23.4	-	-
PM Peak Hour	1800-1900	1800-1900	1700-1800	1800-1900
One-way flow at PM peak hour	3930	4200	3800	3030
T - % (PM)	-	15.5	-	-
Prop.of commercial vehicles - 16 hr.	-	24.1	-	-

3. OTHER INFORMATION AND COMMENT

4. Vehicle classification and occupancy - Monday to Friday

Time		Class of vehicle									
		Motor	Private	Taxi	Private	PLB	Goods veh.		Non	Fr. Bus	
		Cycle	Car		LB		Light	M & H	Fr. Bus	SD	DD
0700-0800	Pro	1.9	32.9	14.1	0.7	3.1	19.6	20.9	5.0	0.3	1.5
	Ocp	1.0	1.4	1.9	6.4	12.1	1.5	1.1	9.5	16.8	22.2
0800-0900 Peak Hour	Pro	2.2	40.8	11.2	0.8	2.1	17.9	20.4	3.7	0.3	0.6
	Ocp	1.0	1.4	1.9	5.8	13.7	1.5	1.1	14.5	26.9	34.2
0900-1000	Pro	0.9	34.9	9.5	1.1	2.1	22.3	25.7	2.5	0.4	0.8
	Ocp	1.1	1.5	1.7	2.8	11.9	1.4	1.1	12.9	16.2	21.8
1000-1100	Pro	1.1	28.7	10.2	0.9	1.7	24.4	28.4	3.3	0.4	0.9
	Ocp	1.0	1.5	1.7	1.8	11.2	1.5	1.2	16.2	20.7	18.2
1100-1200	Pro	1.2	32.1	10.2	0.8	2.2	24.0	25.2	3.0	0.4	0.9
	Ocp	1.1	1.5	1.8	1.7	10.6	1.4	1.2	12.0	25.9	20.6
1200-1300	Pro	0.8	33.7	10.5	0.9	2.1	23.4	25.4	1.8	0.5	0.9
	Ocp	1.2	1.5	1.9	4.8	8.5	1.5	1.1	16.5	19.9	20.1
1300-1400	Pro	0.8	31.4	9.3	0.5	2.1	24.9	26.6	3.2	0.6	0.7
	Ocp	1.0	1.6	2.0	3.8	10.1	1.5	1.2	10.0	18.6	21.0
1400-1500	Pro	0.7	28.5	11.1	0.9	2.1	24.6	28.1	2.7	0.5	0.8
	Ocp	1.1	1.6	1.9	1.5	11.8	1.5	1.2	11.1	20.2	25.6
1500-1600	Pro	1.0	29.6	11.5	0.6	1.5	25.7	26.2	2.5	0.5	0.9
	Ocp	1.1	1.6	1.8	3.3	12.9	1.4	1.2	14.8	20.4	22.4
1600-1700	Pro	1.1	31.8	12.9	0.8	1.5	23.6	24.6	2.3	0.5	1.0
	Ocp	1.0	1.5	1.8	3.6	13.0	1.5	1.1	16.9	30.9	25.3
1700-1800	Pro	1.4	39.5	8.2	1.1	2.0	23.6	18.7	4.1	0.5	0.9
	Ocp	1.0	1.5	1.8	2.6	13.9	1.5	1.1	14.5	30.7	33.0
1800-1900	Pro	1.5	50.1	9.7	0.5	2.3	18.3	13.4	3.0	0.5	0.8
	Ocp	1.1	1.5	1.9	3.0	15.3	1.4	1.1	12.0	33.9	33.2
1900-2000	Pro	1.8	55.3	12.4	0.5	2.7	13.9	8.2	3.8	0.5	1.0
	Ocp	1.1	1.5	1.8	1.5	12.0	1.3	1.1	10.5	29.5	21.8
2000-2100	Pro	1.9	54.2	14.2	0.4	3.1	11.9	6.7	5.6	0.5	1.4
	Ocp	1.1	1.5	1.9	1.4	12.7	1.3	1.1	7.6	18.6	13.0
2100-2200	Pro	1.1	57.6	15.0	0.1	3.3	12.2	5.5	3.5	0.5	1.2
	Ocp	1.0	1.6	1.9	1.0	11.2	1.5	1.1	11.1	21.1	17.5
2200-2300	Pro	1.2	56.2	20.8	0.2	2.1	9.2	5.9	2.5	0.5	1.5
	Ocp	1.0	1.5	1.8	1.5	8.2	1.3	1.1	6.5	13.1	11.9
16 hours	Pro	1.3	38.8	11.5	0.7	2.2	20.5	20.2	3.3	0.4	0.9
	Ocp	1.1	1.5	1.8	3.2	12.0	1.5	1.1	12.2	23.4	22.6

Legend

Pro. Proportion of vehicles in % (Sum may not add up to 100% due to figure rounding)
Ocp. Average occupancy of vehicles
M & H Medium and Heavy